

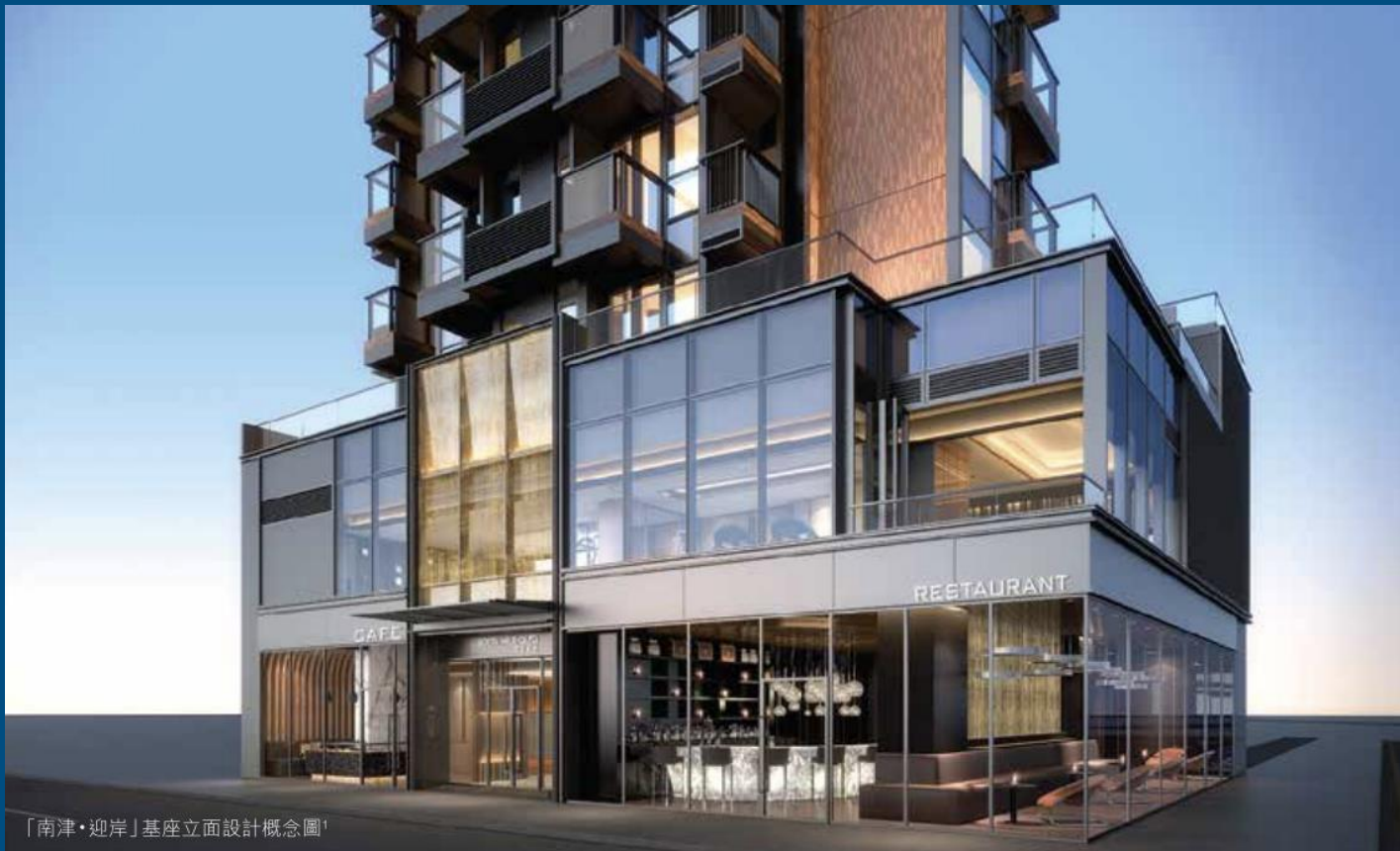
## South Walk - Aura

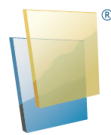
Address: 12 Tin Wan Street, Aberdeen

Room Type: 1-2 rooms

Price : HKD 5.05 million

Unit area : 164-493 sq ft





## Main features

### <Characteristics>

Club house facilities : Gym, Banquet hall  
Property Management : H-Privilege Limited  
Developer : Henderson Land

### <Environment>

Positioned near Aberdeen Promenade, the exceptional experience of premium south-facing seafront living  
Cyberport now offers large number of Grade A smart office buildings, more than 300 technology and digital business companies located at there, including Microsoft Hong Kong, IBM, Lenovo Group, etc

### <Nearby school>

Primary school net 18, Southern district secondary school and international school

### <Traffic>

Nearby the future South Island Line (West). In the future, depart from Tin Wan station, reach Cyberport in 2 stations; reach Hong Kong University or Admiralty station in 4 stations; reach Central or Tsim She Tsui station in 5 stations

Benefited from the transformation of Wong Chuk Hang, the housing demand will be risen